

7. Level 2 Repair

7-1. disassemble

1

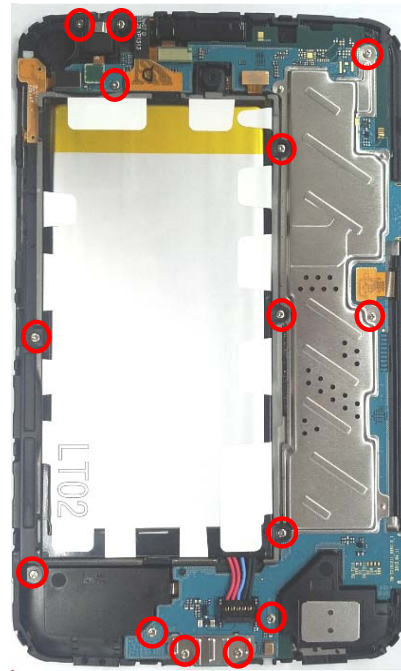
1) Disassemble Rear Cover by using jig



1) Caution : LCD FPCB Crack

2

1) Disassemble SCREW



1) Caution : PCB & material damage

2) Caution : FPCB CRACK

3

1) Disassemble connector FPCB



1) Caution : Connector damage

4

1) Disassemble Battery



5

1) Disassemble PBA



1) Caution : PBA Damage.

7-2. Assembly

1



Sequence	Work
PBA connection	assemble PBA to Braket.

NO	MATERIAL NAME	CODE	MODEL NAME	Quantity
1	ASSY SMD	GH94-07541A	SM-T2105	1
2	ASSY PBA MAIN	GH92-10956A	SM-T2105	1

2



Sequence	Work
Assemble PBA	1. Assemble Batterty 2. Connect PBA to FPC Connector

NO	MATERIAL NAME	CODE	MODEL NAME	Quantity
1	INNER BATTERY APCK	GH43-03911A	SM-T2105	1
2	TOUCH/PANEL	GH59-13339A	SM-T2105	1
3	KEY FPCB-LCD CON TO CON	GH59-13383A	SM-T2105	1
4	SIDE KEY FPCB	GH59-13392A	SM-T2105	1
5	EARJACK FPCB	GH59-13414A	SM-T2105	1
6	ASSY CAMERA 1.3M_VT	GH96-06307A	SM-T2105	1
7	ASSY CAMERA 3M	GH96-06360A	SM-T2105	1

3



Sequence	Work
Assemble SCREW	1. Assemble SCREW(14 POINT)

NO	MATERIAL NAME	CODE	MODEL NAME	Quantity
1	SCREW-MACHINE	6001-002051	M1.4X2.5	14

4



Sequence	Work
REAR Assembly	<ol style="list-style-type: none"> 1. Before assemble rear case, check connector connection & appearance 2. When start assemble rear case, don't push power button 3. assemble rear case like upper picture sequence 4. After assemble rear case, check volume key, power key (Key click feeling, Sticking)

NO	MATERIAL NAME	CODE	MODEL NAME	Quantity
1	ASSY CASE-REAR	GH98-28154A	SM-T2105	1